

NORMAN ROCKWELL MUSEUM



annual report

fiscal years
2014 & 2015



Students petition for Rockwell!

Edward A. Reynolds West Side High School students from N.Y.C. visit NRM after a year-long effort to petition the City of New York to add a secondary street sign at 103rd Street, for Norman Rockwell's birthplace.



Norman Rockwell Place

Sign our petition on Election Day!

A great American illustrator and painter was born at West 103 Street and Amsterdam Avenue. Edward A. Reynolds West Side High School is on a mission to have the current West 103rd Street sign with a secondary street sign "Norman Rockwell Place". Why honor Rockwell? He was an artist who made America recognize "The Problem We Live With", as titled in his portrait of segregation, in the Ruby Bridges painting. He was a man who promoted brotherhood and forced America to face the shame of racism and prejudice in our society. Please do us the honor and sign our petition. Thank You!

November 4, 2014

Election Day – 7am to 6pm

**140 W 102nd St, New York, NY 10025
212-678-7300**

sharing, caring & connecting: fy15 accomplishments

director's report	5
6	sharing through pictures
10	connecting learners
12	caring & preserving
14	growing through your support
18	exhibitions
20	measures of success
22	financial report
24	acquisitions
30	art loans & lenders
contributors & donors	32
staff	36

6/25/2015
 One of the BEST exhibits at the U.N. !
 I'm a staff member, I started as a Tour Guide
 and always stopped my groups in front of the
 Golden Rule mosaic. What a great retrospective
 on Norman Rockwell! The prep drawings are
 amazing. Thank You! Maria Marchese-Nova

Chloé Sophie Nova 7 years
 old ♡
 I love this exhibit!
 June 25, 2015 ♡

So love the exhibit!
 Julian Tristan Nova
 6/25/2015

Entries from the United
 Nation's Visitors' guest
 book, about the exhibition,
*We the Peoples: Norman
 Rockwell's United Nations.*

Dear Norman Rockwell,
 My name is David Chen and I am a high school student
 from Portland, OR. I came to the United Nations because I am
 inspired by the work it does. So much so, that I have joined
 my state's HS chapter of Model UN. Your artwork is not only
 beautiful, it also speaks so intimately to the ideals of the UN. I particularly
 like your painting of the USSR, UK, and US delegates with
 ordinary citizens of the world looking on. This is a touching reminder
 of the work the UN does: the people's work.
 Thank you for sharing your beautiful artwork!

David Chen
 UN Visitor-2015

BOARD OF TRUSTEES

OFFICERS

Robert Horvath, *Chairman*
 Alice Carter, *President*
 Jamie Williamson, *1st Vice President*
 John V. Frank, *Treasurer*
 Peter Chase Williams, *Clerk*

TRUSTEES

Brian J. Alberg
 Dolf Berle
 Stephen Boyd
 Ruby Bridges
 Alexander F. Brown
 Anthony Consigli
 Walter & Mary Jo Engels
 Mary K. Grant, Ph. D.
 Johnny Haney
 William Hargreaves
 Louise Holland
 John Hyson
 Frederick Keator
 Richard Kelly
 George & Valerie Kennedy
 Carol Konner
 Edward (Ned) Lamont
 Magdalen Livesey
 Jorja-Ann P. Marsden
 Anne H. Morgan
 Duncan Pollock
 Daisy Rockwell
 John Spellman
 Steven Spielberg
 Murray Tinkelman

TRUSTEES EMERITI

Lila W. Berle
 Ann F. Brown
 Paul W. Ivory
 David Klausmeyer
 Mark A. Krentzman
 Wendell Minor
 Perri Petricca
 Thomas L. Pulling
 Mark A. Selkowitz
 Richard B. Wilcox

NATIONAL COUNCIL MEMBERS

Dr. Malouf & Therese Abraham
 Craig & Rosalie Berger
 Jack & Martha Campbell
 Carl & Eunice Feinberg
 Timothy & K. Susan Fidler
 Nancy Fitzpatrick & Lincoln Russell
 David & Marita Glodt
 John G. & Pamela Goode
 Deborah D. Hoover
 Barry & Pamela Kriebel
 Steven Lomazow
 Ron Miller
 Michael Shane Neal
 Ann Daly Printon
 Michael and Ramelle Pulitzer
 Edward L. Pulling
 Chuck Pyle and Tina Hittenberger
 Elihu & Susan Rose
 John & Laura Savio
 Sol Schwartz
 Marion Simon
 Ted Slavin
 Jamie & Laura Trowbridge
 Ron & Marilyn Walter
 Judy Francis Zankel

director's report

Norman Rockwell Museum is both an art museum and a center for academic research in the ever-popular field of American illustration art, the people's art. What we do is unique among museums: sharing, caring and connecting Norman Rockwell's legacy and the art of visual storytelling, with the world. People of all ages and backgrounds express joy when visiting our Stockbridge Museum and its beautiful, nature-filled campus. Learners create meaning in their lives by connecting the images they see in our galleries with their own stories and experience empathy for others. We create community and inspire civic engagement wherever people experience Norman Rockwell's art.

It has been an exceptional year. Sharing more than 20 vibrant exhibitions at venues in our town, across the country, and abroad; caring for our art and archival collections growing through generous donations; and connecting to our growing audiences through new scholarship, access, and experiences to bring illustration art wide and diverse to communities around the globe, are among the highlights of the year.



By creating compelling exhibitions from Stockbridge to Rome, from South Dakota to the United Nations headquarters in New York, we change lives by sharing our nation's story through pictures. We connect learners of all ages through digital engagement and intimate in-person educational experiences. You will read in this report about the many exciting platforms we designed to expand access and create learning experiences with our collections, imparting the art of the people.

Norman Rockwell Museum continues to lead on many fronts—in innovation, outreach, and scholarship. We hope you will be inspired by our activities this past year. You make the Museum's extensive reach possible. Small and focused, we are saving and sharing an important aspect of our nation's visual culture to inspire a more caring and inter-connected world.

This year of success was accomplished with the dedicated work and contributions of the Rockwell Museum community—our Board of Trustees, National Council, generous volunteers and donors, and caring staff. We are poised for an exciting future as we approach our 50th Anniversary in 2019. We are grateful for the leadership of two outstanding trustees, each educators, scholars and collectors of American illustration, Chairman **Bob Horvath**, and President **Alice Carter**. Their leadership inspires us. I would also like to add a special note of appreciation to my assistant, **Ann Sterlin**, upon her retirement after 26 devoted years, more than half the Museum's lifetime and more than a third of her own. We will miss you Ann and wish you many wonderful years ahead.

Warm regards,

Laurie Norton Moffatt
 Director/CEO

leading by sharing, caring, and connecting

Sharing our nation's story through pictures

Today, we see a renaissance of the artist as storyteller. From the increase in animated stories for both film and television, to the popularity of graphic novels and political cartoons inviting us to take a closer look at the world, to the strong sales of artwork by illustrators at auction—there is a

hunger for what is tangible in the world around us. Illustration art is the mirror that reflects us as a people. It shows us where we come from, who we are, and even who we aspire to be. It can be provocative, persuading, challenging, illuminating, dark, and hopeful.



One Vision

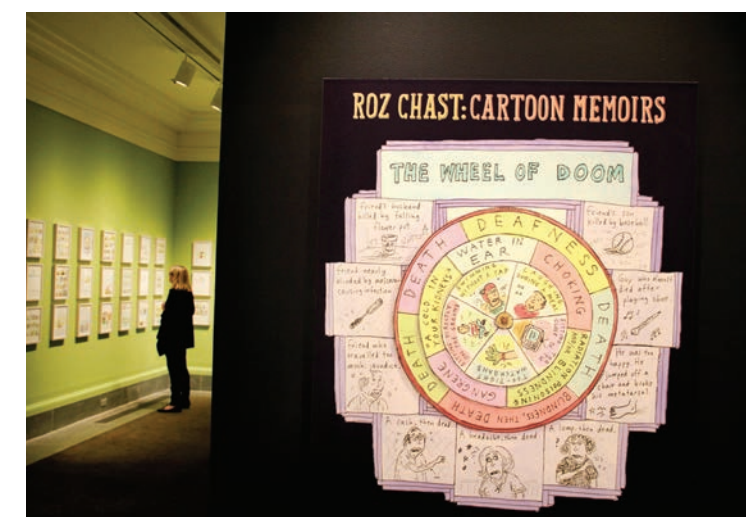
At the Norman Rockwell Museum, our vision is to share our nation's story through pictures. We do this by presenting local, national, and international exhibitions and by providing public access to our vast digital collections representing America's most prominent visual storytellers.

Through these multiple points of contact, we share the art, history, and cultural significance of illustration art with the broadest possible audience.

In 2014/15, Norman Rockwell Museum exhibitions highlighted the art of Edward Hopper and J.C. Leyendecker, illuminating American aspirational aesthetics during the early 20th century. Our popular exhibition of works by contemporary

illustrator Mort Kunstler portrayed drama, humor, history, and adventure. Our summer exhibition featuring the award-winning imagery of New Yorker cartoonist Roz Chast inspired laughter and prompted dialogue about the realities of aging, and our annual Berkshire County High School Art Show offered a window into the world through the eyes of the next generation.

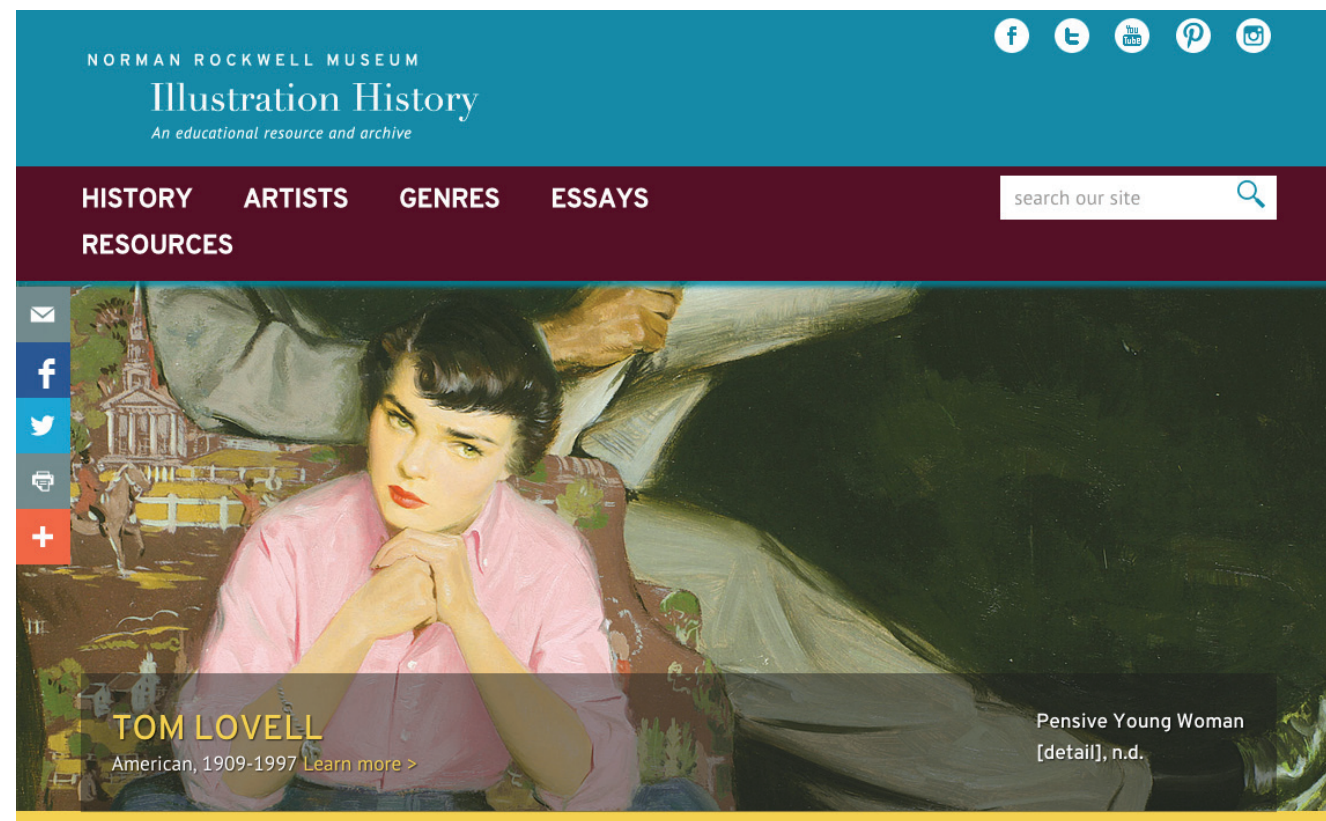
This past year, we reached new audiences with traveling exhibitions in Rome, Italy, and cities across America—including Sarasota, Florida; Joplin, Missouri; Appleton, Wisconsin; and Winchester, Virginia. We even brought Norman Rockwell home to New York for a historic exhibition at the United Nations.



Delightful Roz Chast exhibit plus Rockwell classics. The Roz Chast exhibit was a joy. She taps into the anxieties and neuroses that so many of us experience. People were laughing out loud in the galleries.

—6.21.15 Visitor's Trip Advisor review

Sharing our nation's story through pictures, continued



Our digital footprint increased with the launch of a groundbreaking Illustration History website—www.illustrationhistory.org. Made possible, in part, with generous funding from the National Endowment for the Arts, this first-ever site devoted to the history of the field—from pre-history to contemporary times—is a continually-

evolving resource for students, educators, scholars, and the general public. This new website joins the Rockwell Center for American Visual Studies and the Frank E. Schoonover online *catalogue raisonné*, rounding out the most significant online source related to the art of illustration.

Congratulations on the spectacular new History of Illustration website! It's thrilling to see so much scholarship on illustration in one place. Plus, it's simply gorgeous.

—Skye Lacerte
Modern Graphic History Library Curator
Washington University in St. Louis

More to come

Our commitment to reach new audiences expands. Upcoming exhibitions at the Museum bring us to the prairies of the Midwest through the art of Harvey Dunn, and to the 1950's advertising world of New York City with imagery by 102-year-old illustrator, Mac Conner. Our traveling exhibitions transport Rockwell's work, and the art of illustration, around the country, from Utah to Virginia, and beyond.

We continue to investigate new ways to

engage young people with our collections and scholarship—in the galleries and online. And we are developing an historic, international tour of Rockwell's original *Four Freedoms*. The exhibition will be launched in 2017 to coincide with the 75th anniversary of President Roosevelt's Four Freedoms address in 1941, which inspired Rockwell to render the freedoms in what *American Artist Magazine* calls "the most important paintings of our time."



connecting learners to the art and humanity of norman rockwell

Norman Rockwell's masterful art, his unique expression of enduring universal values, and his commitment to civic participation provide a strong basis for the Museum's educational programs on-site, off-site, and online. Recurring

themes in his paintings—about the importance of life's small moments and of kindness, decency, tolerance, human rights, community, and civic responsibility—are central to our educational programming and methods of teaching.



A Focus on Universal Access

A significant investment in our education programming from the George Lucas Family Foundation enabled us to begin contemporizing our offerings to reach younger digital learners. We created a new division of **Digital Learning and Engagement** who is collaborating with Museum staff and local and national educators to develop materials that will engage young learners in exciting, immersive experiences. Foremost in our plans is development of a **new online Rockwell-based humanities curriculum**.

Our hands-on educational work continues to

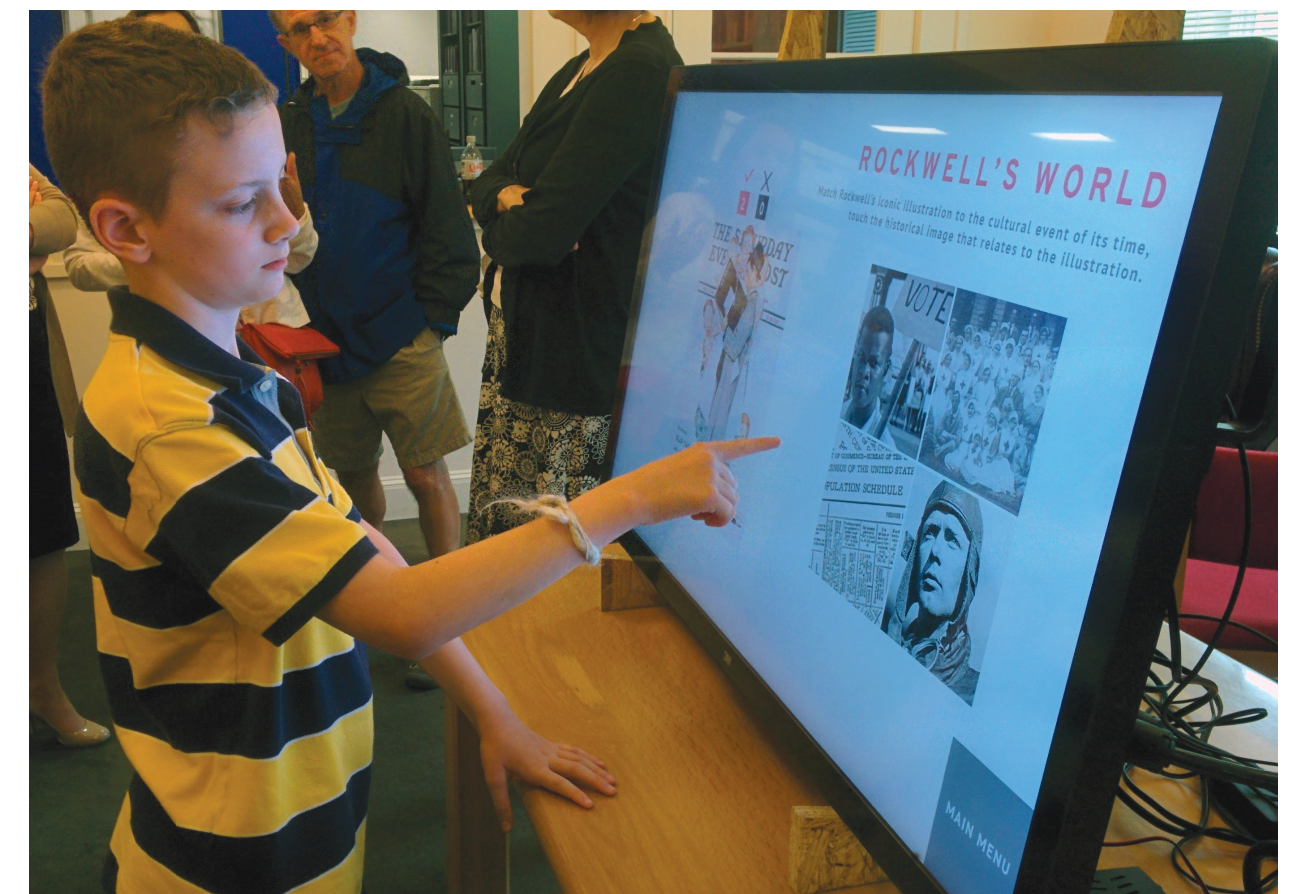
More to Come

Look for enhanced outreach to our community through the Museum's visionary new **Berkshire Youth Passport Program**, connecting younger learners across the region with the Berkshires' rich cultural offerings, and a galvanizing national campaign called **Live Freedom Every Day**,

build around empowerment of urban and rural youth. Museum-based projects in New York City; Pittsfield, Massachusetts; and Newtown, Connecticut encouraged community-building and greater study of Rockwell's message of mutual respect, tolerance, democracy and freedom.

A grant from the Leonard Green Foundation helped us strengthen educational infrastructure and programs to better serve area students, with a goal to boost their participation in our programs, while we began to shape new online programs to engage more young learners in the Berkshires and beyond.

highlighting our upcoming **Four Freedoms touring exhibition** and encouraging civic participation. We will also focus on the development of new digital curriculum and spearheading other innovative, online programming to engage today's learners.



leading the care & preservation of american illustration art

The Museum's collection of original artwork has expanded significantly over the past three years, thanks to generous donors who embrace our mission to establish a permanent legacy for the art of illustration. Preservation is at the heart of our curatorial mission. Today, with nearly 800

original Norman Rockwell paintings and drawings and close to 25,000 works by other illustration masters in our holdings, our Museum is a leading national advocate for the care and preservation of America's illustration collections.

I'm just thrilled that the painting [Puppy Love] is going to be there in the Museum. I actually wrote Mr. Rockwell a letter and told him I had purchased it, and I remember him writing me a letter back saying, 'I'm glad Puppy Love finally has a happy home.' Now it will be at home at the Museum, where hopefully thousands of people can also view it.

—Bill Millis
Donor of Norman Rockwell painting, *Puppy Love*

History in the Making

The Museum continues to build its outstanding Permanent Collection of Rockwell and illustration art through the generosity of our donors.

With great fanfare the Museum announced the donation of an original Rockwell painting; the iconic and beloved *Puppy Love*, at a press conference on February 13, resulting in widespread media coverage and excited visitors on Valentine's Day and thereafter. Rockwell, a self-proclaimed specialist in painting child-centered scenes, elevated the status of his youthful subjects by portraying them as complex

individuals with dignity, despite their economic status, as exemplified in this image created for a 1926 *Saturday Evening Post* cover.

Two additional Rockwell paintings were donated, featuring scouting images, including *Army of Friendship* (1933) and *A Good Scout* (1935), which help us to illuminate an important aspect of the artist's career.

Other significant gifts of art have broadened our comprehensive holdings of illustration art, from historical to contemporary. See pages 24 to 25 for a complete list of acquisitions.



Caring & preserving, continued

More to Come

In 2014, the Museum received a second significant gift of 67 additional original artworks and hundreds of archival items from the Famous Artists School, including original drawings by Norman Rockwell. Organizing and protecting this tremendous collection became a top priority. In an ongoing effort to preserve important artworks, publications, and film-based materials, we are processing and rehousing these and the additional new objects that joined our collection this year, in our climate-controlled storage area.

In the coming months, two large-scale charcoal drawings will receive conservation at the Williamstown Art Conservation Center,

including, *The Gossips*, Rockwell's popular 1949 Arlington-era image, and *Family Tree*, a 1959 study for a famous Stockbridge work. The care and reconstruction of each drawing will be costly, taking place over the course of several months, but it is a crucial aspect of the Museum's stewardship of the artist's legacy.

Comprehensive contextual exhibitions focusing on the artistic and cultural impact of artistic giants Norman Rockwell and Andy Warhol, and of Maxfield Parrish, and N.C. Wyeth, are also in the works, to be presented in Stockbridge and at other museum venues in 2017, 2018, and beyond.



For more than a century, Americans pictured the larger world through the illustrations published in magazines and periodicals... Preserving and analyzing this legacy is crucial to understanding the past, describing the present, and inspiring the future.

—Alice Carter,
Board President,
Norman Rockwell Museum

growing stronger

through your support, involvement and collaboration

Your support

Because of your support, each year we grow stronger in our mission and vision. Last year, we reached new audiences and increased our program staff to better serve the needs of our growing community. We gained new contributors, seeing an increase in both membership and contributed support for major projects. And, we added new members from around the country to our advisory councils.

Some highlights include:

- First-time support from **United Nations Foundation**. This partnership helped us bring a phenomenal Norman Rockwell exhibition, *We the Peoples* to the United Nations Headquarters in New York.
- Our Four Freedoms Advisory Council, led by **Ambassador William vanden Heuvel**, laid the groundwork for the forthcoming *Four Freedoms* exhibition.



In unique and at times unsung ways, Norman Rockwell ... sought to show how we are part of something larger.

—Ban Ki-moon
United Nations Secretary General



Growing stronger through your support, involvement and collaboration, continued

- The travel of our popular exhibition, *American Chronicles*, to Rome, Italy, where it was viewed by more than 43,000 visitors.
- Our record-breaking June gala highlighted the accomplishments of Museum leaders Anne Morgan, Thomas Pulling, and Mark Selkowitz and kicked off the groundbreaking exhibition of the work of renowned New Yorker illustrator Roz Chast.



American Chronicles: The Art of Norman Rockwell

11 novembre 2014 - 8 febbraio 2015
 Fondazione Roma Museo - Palazzo Sciarra
 via Marco Minghetti 22, (angolo via del Corso) Roma
 normanrockwell.it fondazioneromamuseo.it



June Gala 2015



More to Come

There are many opportunities for you to become involved with the Museum—whether it be our traveling or on-site exhibitions, our growing educational offerings, or preservation of our campus and its historic buildings and grounds.

We thank you for your partnership and friendship to Norman Rockwell Museum.

We are stronger because of your involvement and collaboration. Thank you for all that you do!



exhibitions

Norman Rockwell's 323 Saturday Evening Post Covers
on view throughout the year

A Day in the Life: Norman Rockwell's Stockbridge Studio
May to October



American Chronicles: The Art of Norman Rockwell
June through August 31, 2014

The Unknown Hopper: Edward Hopper as Illustrator
June 7 through October 26, 2014

Curator's Choice: Selections from the Permanent Collection
August through December 2014

Mort Künstler: The Art of Adventure
November 8, 2014 through February 8, 2015



Norman Rockwell: Home for the Holidays
November 22, 2014 through February 8, 2015

28th Annual Berkshire County High School Art Show
February 7 through March 8, 2015

J.C. Leyendecker and The Saturday Evening Post
March 21 through June 14, 2015

Roz Chast: Cartoon Memoirs
June 6 through October 26, 2015

Norman Rockwell: Heroes, Humor, and Growing Up
June through October 18, 2015



traveling exhibitions

American Chronicles: The Art of Norman Rockwell
Fondazione Roma-Arte-Musei
Rome, Italy
November 10, 2014 - February 8, 2015

Tampa Museum of Art
Tampa, Florida
March 7 - May 31, 2015

Dinotopia: The Fantastical Art of James Gurney
Stamford Museum & Nature Center
Stamford, Connecticut
February 14 - May 25, 2015

Mort Künstler: The Art of Adventure
Museum of the Shenandoah Valley
Winchester, Virginia
May 9 - August 2, 2015

Murder in Mississippi
(Cameo section from *American Chronicles*)
Mississippi Museum of Art
Jackson, Mississippi
June 14 - August 31, 2014

Norman Rockwell's 323 Saturday Evening Post Covers
Spiva Center for the Arts
Joplin, Missouri
September 20 - November 8, 2014

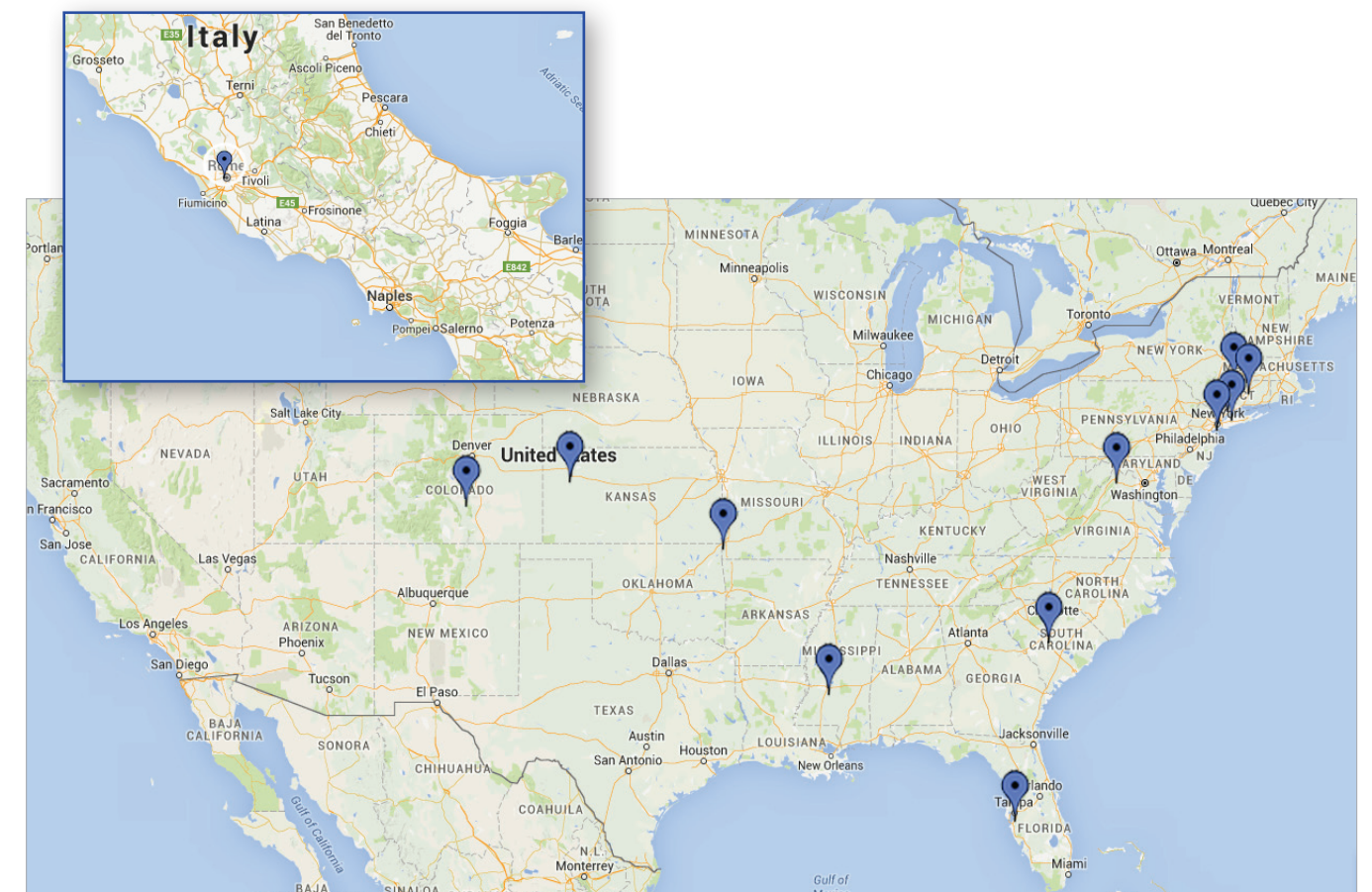
Norman Rockwell and the American Family
Fremont Center for the Arts
Canon City, Colorado
July 4 - August 31, 2014

MeadowBrook of Granby
Granby, Connecticut
October 10, 2014- January 4, 2015

Norman Rockwell: Behind the Camera
Columbia Museum of Art
Columbia, South Carolina
October 17, 2014 - January 18, 2015

Norman Rockwell: Home for the Holidays
Fick Fossil & History Museum
Oakley, Kansas
November 3, 2014 - January 15, 2015

We the Peoples: Norman Rockwell's United Nations
United Nations Headquarters
New York, New York
June 20 - September 15, 2015





measures of success **fy 2015**

Each year the Museum strives to meet our strategic vision and goals; the important measures of our progress and success go far beyond the financial report and are highlighted by the following statistics and information.

audience engagement, education and community involvement

* = of note

fy 14-15	fy 13-14	
11	11	exhibitions held at nrm
8	7	traveling exhibitions
10	8	# of Museums/venues
9	7	# of States
2	1	# of Countries
119,142	200,636	visitors to Traveling Exhibitions
	20,142	student visitors
collections		
*905	403	new art acquisitions to NRM collection
20	35	artists represented
*8,887	7,982	total artworks in NRM collection
788	784	Norman Rockwell works
8,100	7,198	works by other American illustrators
1,200	*6,000	items added to archive/library
*151,200	*150,000	total inventory to date (items/objects) <i>* approximate; includes estimates from Famous Artists School acquisition.</i>
50,058	46,713	ProjectNORMAN total records to date
scholarship		
NRM staff lectures, teaching, programs		
39	23	staff-presented lectures/programs at NRM
71	62	staff-presented lectures/programs off-site
80	82	guest lectures/programs presented at NRM
	3	graduate-level college seminars
29	21	illustration network partners in the Rockwell Center of American Visual Studies

fy 14-15	fy 13-14	engagement
*130,353	125,126	total # of visitors to NRM
9	10	% Berkshires
26	28	% Massachusetts
95	95	% USA
5	5	% International
85.5%	85%	% PAID admission
14.5%	15%	% FREE admission
63%	62%	% discounted admission
11.5%	14%	% children & students
18,593	17,202	FREE ADMISSION provided to
5,946	5,458	free days visitors and donated admission passes
5,537	4,826	library pass visitors
1,666	2,282	children 5 and under
2,510	2,214	museum members
1,013	746	group tour leaders
402	549	school teachers/chaperones
961	716	community/Stockbridge residents
558	411	active military and family members
57	59	# school and educator programs
2,350	1,968	participants on site
198	182	participants off site
*2,548	2,150	servicing # of students and teachers
63	58	volunteers and interns
3,000*	2,400	hours contributed <i>*estimated</i>
35	28	collaborations and promotional partnerships including Joint cultural ticket offers, lodging package partners, discount and bonus programs



fy 14-15	fy 13-14	
*569,754	405,740	NRM.ORG user sessions
1,869,778	1,015,999	page views
4	3	# pages per visit
*44%	21%	% of visitors accessing by mobile device
30%	22%	% of international web visits
*12,390	10,657	# of teaching resource guides downloaded
*11,723	4,685	# of digital experience participants
36,872	70,980	ProjectNORMAN user sessions
280,554	268,280	NRM.org online collections page views
29,475	32,543	RockwellCenter.ORG user sessions
94,353	107,080	page views
3.2	3	# pages per visit
44%	41%	% of international web visits
social media		
*21,121	15,090	Facebook fans
45	32	in # countries
639	570	posts
*304,000	230,764	YouTube views
120	109	videos available
900	591	subscribers
*2,869	1,555	Twitter followers
364	301	Pinterest followers
*1280	—	Instagram
4.5	4.5	Trip Advisor rating 1-5
47,503	46,590	E-NEWS subscribers



finance & operations

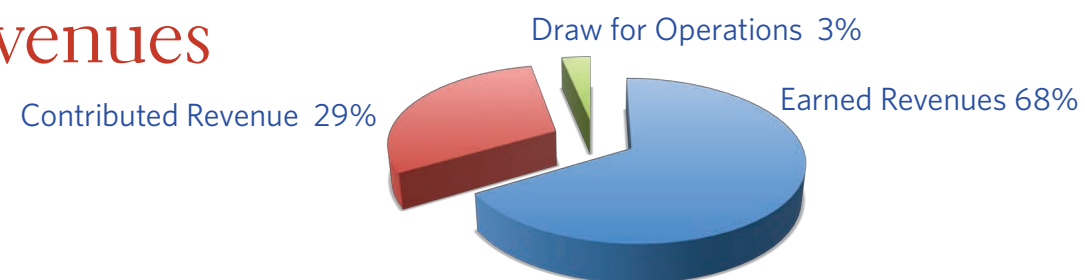
Financial performance for the year ended June 30, 2015 was strong resulting in an operating surplus and increase to net assets of \$276,000 after all expenses including depreciation. This was due to higher than expected total revenue of \$5.2 million with attendance of over 130,000 visitors as well as the generous support of our donors, members, trustees and national council. Contributed revenue accounted for 29% of total revenue. We are thankful for the \$612,000 received through grants and \$1.8 million in support from individuals, corporations, foundations and the government this year which funded our strategic priorities. Earned revenue from admissions and net contributions from the store and other business accounted for \$3.5 million or 68% of total revenue. Endowed and designated funds of \$3.8 million funded 3% of the operating budget this year and continue to grow with average annualized returns of 10% over the past three

years thanks to the board investment committee oversight.

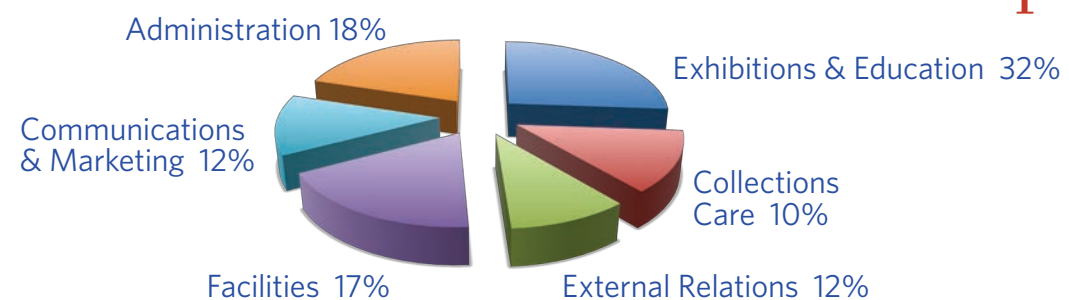
The Museum remains debt free and maintains fiscal discipline with operating expenses 2% under budget for the year. Capital investments in facilities and infrastructure totaled \$320,000 for the year and the Museum continues to focus on campus improvements and technology systems including recent overhauls to admissions, financial and payroll systems.

The year ahead will continue to focus on strengthening the financial foundation of the Museum through growth and innovation, efficient operations and prudent management of finances including investment in human resources to support the exciting initiatives and strategic priorities of the museum leadership and board.

revenues



expenses



FINANCIAL STATEMENTS AS OF JUNE 30

Condensed Statement of Financial Position

	fy 15
Assets	
Cash and cash equivalents	\$345,092
Receivables	333,298
Store Inventory	571,735
Investments	3,758,228
Property and Equipment	3,766,006
Total assets	\$8,774,359

Liabilities and Net Assets

Payables	\$86,758
Debt	0
Deferred Income	312,712
Total Liabilities	399,470
Total Net assets	8,374,890
Total Liabilities & Net Assets	\$8,774,360

Condensed Statement of Operations

Operating Revenues

Admissions Income	\$1,646,624
Gross Profit from Store Operations	854,446
Traveling Exhibition Fees	735,700
Other Earned Revenues	302,252
Contributions & Gifts	695,155
Memberships	181,376
Grants	612,650
Draw for Operations	152,401
Total Revenue	\$5,180,604

Operating Expenses

Exhibitions & Education	\$1,519,660
Collections Care	497,449
Fund Raising & External Relations	567,598
Facilities & Depreciation	810,584
Marketing & Communications	559,916
Administration & Business Operations	863,545
Total Expenses	\$4,818,752

Change in net assets from operations	\$361,852
Income from Investments, net of draw for operations	\$(85,414)

Net change in assets	\$276,438
-----------------------------	------------------



The condensed statement of financial position and operations is derived from the Norman Rockwell Museum's June 30, 2015 audited financial statement by Wolf and Co., whose report expressed an unqualified opinion on this statement. A complete copy is available upon request.

acquisitions

DONATIONS OF ORIGINAL ILLUSTRATION ART

Gift of The Estate of Caroline D. Bain

Norman Rockwell (1894-1978)
 1 *Portrait of Mr. and Mrs. Henry W. Dwight*, 1959
 Pencil on paper

Gift of R.O. Blechman

R.O. Blechman
 2 *Feng Shui* 2010
 Ink, watercolor, silver paint, and collage on paper

Gift of Nancy Childress

3 Collection of original illustrations by Robert Childress

Mr. and Mrs. Nelson Clayton

Jan Pieńkowski
 4 Cover illustration for *Cricket Magazine*, October 1975
 Ink on paper

Jean Cunningham/Estate of Robert Cunningham

5 Collection of original illustrations by Robert M. Cunningham
 Collection of original fashion drawings by Jean Cunningham

Estate of Danielle De Mers

6 Collection of 200 original artworks by Joe De Mers

Gift of Mr. and Mrs. Charles Dana Gibson, III

Charles Dana Gibson (1867-1944)
Man with a Shotgun n.d.
 Oil on canvas

Charles Dana Gibson (1867-1944)
Maine Barn [700 Acre Island] n.d.
 Oil on canvas

Charles Dana Gibson (1867-1944)
[Formally Dressed Couples Walking in a Line] n.d.
 Pen and ink on paper

7 Charles Dana Gibson (1867-1944)
[Female Figure in Draping] n.d.
 Pencil on paper

Gift Of Robert T. Horvath

Edwin Austin Abbey (1852-1911)
[The Drummer] 1878
 Charcoal and gouache on paper

Thomas Fogarty (1873-1938)
[Interior Scene] n.d.
 Ink on paper

Thomas Fogarty (1873-1938)
[Dinner Party] n.d.
 Ink on paper

Thomas Fogarty (1873-1938)
 8 *[Making Merry]* n.d.
 Ink on paper

Reaburn van Buren (1891-1987)
[Sympathy] c. 1950
 Pencil on paper

Gift of Everett Raymond Kinstler

Everett Raymond Kinstler
Sketch of Illustrator Mac Conner, 2007
 Charcoal on paper

9 James Montgomery Flagg (1877-1960)
 Theater Sketchbook (10 pages)
 Pen and pencil on paper

James Montgomery Flagg (1877-1960)
 Watercolor Vignettes (2) c. 1940
 Watercolor on paper

James Montgomery Flagg (1877-1960)
Scottish Ruins 1937
 Watercolor on paper

Gift of Magdalene Livesey

Second major donation of original artworks from the Famous Artists School Collection, including 67 original paintings, drawings, and studies from the popular art correspondence course by noted American illustrators and cartoonists. Vast archival collections also feature archival

photographs, films, tearsheets, and correspondence from the Famous Artists, Famous Cartoonists, and Famous Writers courses. Artists featured in this donation include Jon Whitcomb (1906-1988), Bernie Fuchs (1932-2009), George Giusti 10 (1908-1990), Tom Heflin, Austin Briggs (1908-1973), and others.

Gift of Bill Millis and Family Members Bill, Casey, Maggie, Jenny and Jesse Millis

Norman Rockwell (1894-1978)
 11 *Puppy Love (Boy and Girl Gazing at the Moon)* 1926
 Cover illustration for *The Saturday Evening Post*, April 24 1926
 Oil on canvas

Gift of Burton G. Malkiel

Peter Rockwell
 12 *St. Paul on the Road to Damascus*
 Spike-welded metal

Gift of The Estate of Jacqui Morgan

13 Collection of original artworks by illustrator Jacqui Morgan (1939-2013)

Gift of Wendy Popp

Wendy Popp
 14 *One Candle* 2002
 Book illustration for *One Candle* by Eve Bunting, HarperCollins
 Pastel and conté crayon on paper

Gift of Irena Roman

Irena Roma
 15 Original illustrations and studies for *A Mother's Wish* (14), HarperCollins, 2006
 Watercolor and pencil on paper

Gift of Elwood H. Smith

16 Collection of 300 original illustrations and studies by Elwood H. Smith

*pictured

Gift of Joan Diamond Steinberg In Honor of Thomas L. Pulling

James Montgomery Flagg (1877-1960)

17 *[Interior Scene: Man and Woman in Kitchen]* n.d.
 Ink on board

Gift of Carol and Murray Tinkelman/The Tinkelman Collection

Murray Tinkelman
Portrait of Teddy Roosevelt
 Ink on paper

Murray Tinkelman

18 *Portrait of Norman Rockwell*
 Ink on paper

Gift of The Estate of Helen West

Norman Rockwell (1894-1978)
A Good Scout, 1935
 Calendar and cover illustration for *The Boy Scouts of America*
 Oil on canvas

Norman Rockwell (1894-1978)

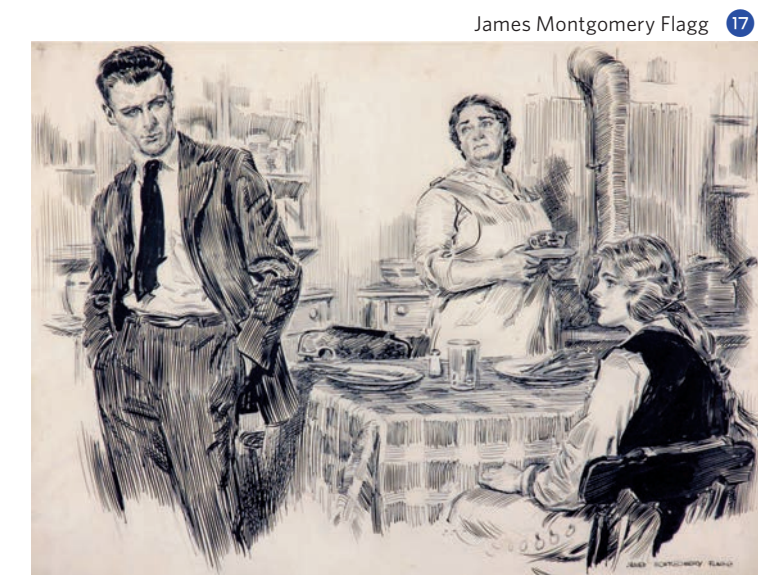
19 *Army of Friendship*, 1933
 Calendar and cover illustration for *The Boy Scouts of America*
 Oil on canvas

Estate of David Wood

Charles Hawes
 20 *Memories of St. Croix* n.d.
 Watercolor on paper
 Signed: "To Molly - Memories of St. Croix, Love Norman"

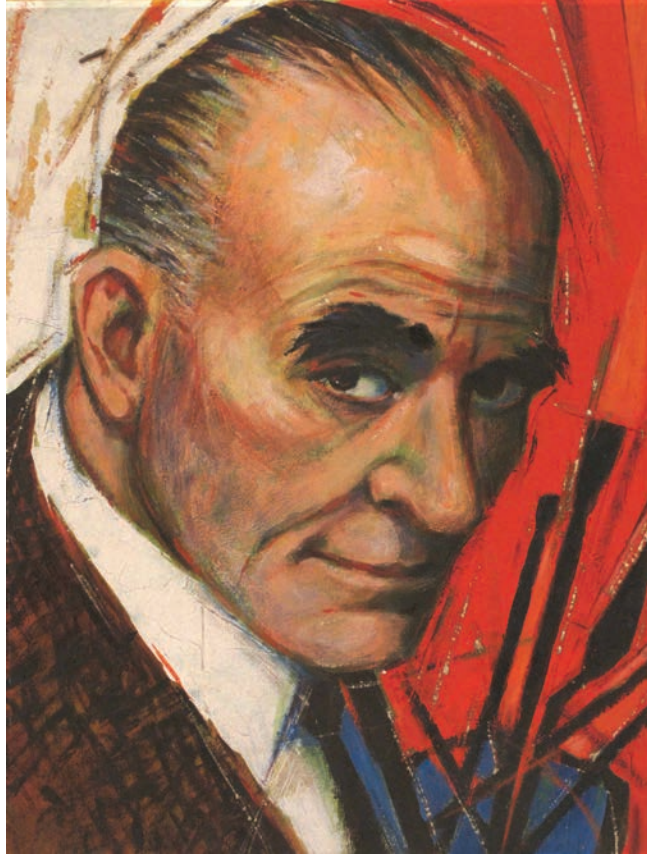
Artist Unknown
Portrait of Norman Rockwell n.d.
 Oil on canvas

GALLERY OF ORIGINAL ILLUSTRATION ART DONATIONS



GALLERY OF ORIGINAL ILLUSTRATION ART DONATIONS continued

Tom Heflin 10



James Montgomery Flagg 9



Thomas Fogarty 8



Irena Roman 15



Charles Hawes 20



Robert M. Cunningham 5



Norman Rockwell 19



Jan Pienkowski 4



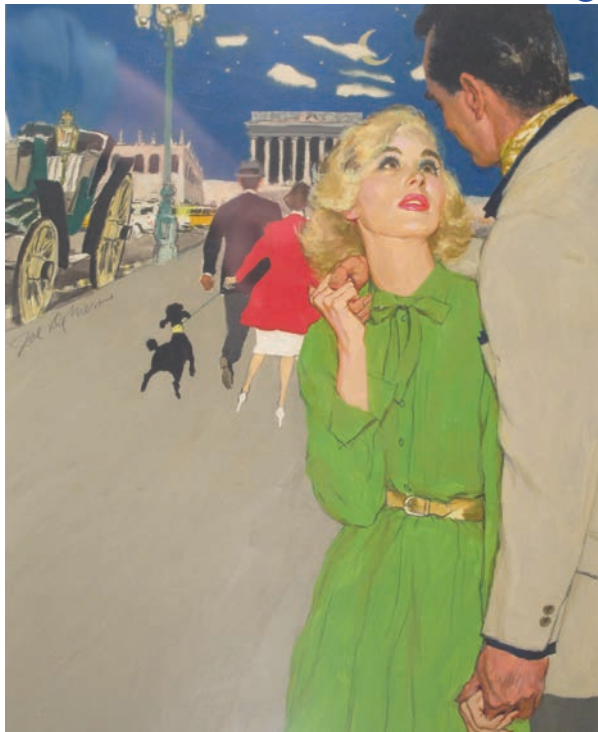
Wendy Popp 14



R.O. Blechman 2



Joe De Mers 6



Murray Tinkleman 6



Jacqui Morgan 13



Norman Rockwell 11



Elwood Smith 15



Peter Rockwell 12



art & archival donors

ARCHIVAL AND LIBRARY DONATIONS

J. Winston Chapman, Jr.
Nancy Childress/Estate of
Robert Childress
Mr. and Mrs. Ned Clayton
Jean Cunningham/Estate of
Robert Cunningham
Estate of Danielle De Mers
Kay and Charles Dana Gibson

Bob Horvath
Dr. Steven Lomazow
Daniel Meyerson
Irene Morey
Michael Morganstern/Estate of
Jacqui Morgan
William Murphy
Paul Oliver

Lynne Pauley
Cameron O. Smith
Mark Sontag
Carolyn Sowell
Estate of David Wood
Stephen K. Yasinow
Dale Zola

EXHIBITIONS LOANS: OUTGOING

The Blanton Museum of Art
Brooklyn Museum of Art
Fondazione Roma Museo
Hood Museum of Art
Massachusetts State House:
Office of the Governor
New York State Historical Association
Roeliff Jansen Community Library
Tampa Museum of Art
United Nations



LENDERS TO THE PERMANENT COLLECTION

Anonymous Lenders (4)
American Legion Post #193,
Winchendon, MA
Judy Aswad
Steward Babbott
United States Bureau of Reclamation
Sally Hill Cooper
The Dowd Family
Richard Gouse
Phillip M. Grace
James Gurney
Dr. and Mrs. Alfred G. Gerteiny
Family
The Estate of Thomas Hoving
Oliver C. Kempton, Jr.

Mary Whelan Leonard
Herbert Lobsenz
Idella Ludwig
Family of Angus Macdonald
John and Nan MacEwen
Kelly Meany
Elizabeth Montgomery/The Family
of William S. Miles
Jan Mott
The Musselman Trust
The National Press Club
Edward E. Neiger
Family of Lowell Paddock
Gail and Thomas Rockwell
Jarvis Rockwell

Peter Rockwell
Peter Rubenstein
The Salem Cross Inn
Geoff Samuels
Bradley M. Schuchat
Mrs. Mary Alice Schwarz
Nelson Severinghaus
Barbara Smith
Sun-Maid Growers of California
Tom Swyers
The Warren Foundation
Williams High School Alumni
Association
Phillip Youngberg

exhibition loans

LENDERS TO NORMAN ROCKWELL MUSEUM EXHIBITIONS

Roz Chast: Cartoon Memoirs

Roz Chast
Danese/Corey Gallery



J.C. Leyendecker and The Saturday Evening Post

The Eisenstat Collection of Illustration
Illustrated Gallery
The Kelly Collection of American Illustration
Carol Konner
Mort Künstler
Tim McCann
The National Museum of American Illustration
Private Collection



Mort Künstler: The Art of Adventure

Mr. and Mrs. Rodger Bahnik
Booth Western Art Museum
Mrs. Rita Cleary
Jeffery Gittleman
Mrs. Deborah Künstler
Jane Künstler
Künstler Enterprise Ltd
Mort Künstler
Mr. and Mrs. Jack Morse
Paul Muldowney
Mr. and Mrs. Alan Nemser
Mr. Jim Rosa, Sr.
Mr. Barton Shallat
Mr. and Mrs. Thomas Suozzi
Tellus Science Museum



The Unknown Hopper: Edward Hopper as Illustrator

The Arthayer R. Sanborn Hopper Collection Trust
The Eisenstat Collection of Illustration
The Illustrated Gallery
The Kelly Collection of American Illustration
The Mead Art Museum
Museum of Fine Arts, Boston
New Britain Museum of American Art
Whitney Museum of American Art



fv 15 contributors & donors

Norman Rockwell Museum is grateful to the following individuals, corporations, and foundations for their significant leadership support from July 1, 2014 through June 30, 2015.

\$250,000 AND UP

George Lucas Family Foundation

\$100,000 AND UP

Institute of Museum and Library Services
George & Valerie Kennedy

\$50,000 AND UP

John V. Frank
Greater Worcester Community Foundation
United Nations Foundation

\$25,000-\$49,999

Bessemer Trust
The Feigenbaum Foundation, Inc.
The Green Foundation
Bill & Sandy Hargreaves
The Illustrated Gallery
Ned & Annie Lamont
Massachusetts Cultural Council
Anne Morgan & James Kelley
Thomas & Eileen Pulling
Sol Schwartz
Andrew & Susan Sordoni
Sordoni Foundation, Inc.

\$10,000-\$24,999

Anonymous
Berkshire Bank Foundation
Dolf Berle
Walter & Mary Jo Engels
Frank E. Schoonover Fund
Felda & Dena Hardymon
The Henry Luce Foundation
Hess Foundation, in honor of Thomas and Eileen Pulling
Highland Street Foundation
Louise Holland
Richard & Mary Kelly
Carol Konner
Mark Krentzman & Caroline Vanderlip
Max & Victoria Dreyfus Foundation
Perillo Tours
Charles Schulze & Lucy Holland
Wayne County Community Foundation
Claudia Wells, in memory of Robert G. Williams

\$5,000-\$9,999

Alarms of Berkshire County
The Burton D. Morgan Foundation
Comalli Electric

Anthony & Susan Consigli
Carl & Eunice Feinberg
David & Marita Glodt
John G. & Pamela Goode
Bob & Lynne Horvath
Amy Liss
Hans & Kate Morris
Duncan & Christen Pollock
Edward L. & Madeline Pulling
Richard & Mary Kelly Family Fund
Robert Lehman Foundation, Inc.
Town of Stockbridge Community Preservation Fund
The Red Lion Inn
Peter C. Williams

\$2,500-\$4,999

Malouf & Therese Abraham
Big Y Foods, Inc.
Jack & Martha Campbell
Consigli Construction
Cindy & Ollie Curme
Richard & Beth Fentin
Timothy & Susan Fidler
Nancy Fitzpatrick & Lincoln Russell
Neil & Jane Golub
Johnny & Beth Haney
Frederick & Renee Keator
David & Suzanne Klausmeyer
Barry & Pam Kriebel
Liberty International
Steven M. Lomazow
Peter & Paula Lunder
Maury & Lillian Novak Charitable Trust
Ron Miller
Wendell & Florence Minor
Craig & Laurie Norton Moffatt, in honor of Anne Morgan, Thomas and Eileen Pulling, and Mark Selkowitz; and in memory of Lee A. Williams
Ann Daly Printon
Michael & Ramelle Pulitzer
Chuck Pyle & Tina Hittenberger
Elihu & Susan Rose
Michael Shane & Melanie Neal
Marion Simon
Ted Slavin
TD Bank Massachusetts
Aine Ungar
Mr. Michael Walker
Ron & Marilyn Walter
Claudia Wells
Judy Francis Zankel

\$1,000-\$2,499

Anonymous (2)
Anonymous, in honor of Margit Hotchkiss
Margaret Ackerman
Sherwood Bain
Michael Bakwin
Jack & Carolyn Batty
Robert & Geraldine Becker
Stephanie Beling
Elizabeth A. Bender
Craig & Rosalie Berger
Donna Bernstein
Peter & Helen Bing
Lee & Sydelle Blatt, in honor of Mark Selkowitz
Nathaniel & Betsy Bohrer, in honor of Mark Selkowitz
Nicholas Boraski
Bruce & Sharon Bottomley
Stephen & Ellen Boyd
Jane Braus
Terry & Bonnie Burman
Sara Chase Carlson
Alice Carter & Courtney Granner
Judy Caywood
Sally Hill Cooper
Michael & Carol Daly
Catharine B. Deely
Jim & Michele Dobbins Dodge
George & Ginger Elvin, in honor of Mark Selkowitz
Ralph & Audrey Friedner
GE Foundation
GE Global Research Center
William & Nancy Goessel
Mary Grant & James Canavan
Werner & Karen Gundersheimer
James Stokes Hatch
Estelle Hendrickson
Joel & Jackie Holt, in memory of Jane P. Fitzpatrick
John & Marilou Hyson
Jay & Valerie Ireland
Lola Jaffe
Martin & Wendy Kaplan
James Kimble & Tina Potuto
Kimble
Sol & Norma Kugler
Carl Lindholm
Dan Magrath
Frank & Katherine Martucci
Timothy & Ann McCann
McCann Family Fund, in honor of Mark Selkowitz
Mr. & Mrs. Robert McGraw & The Black Rock Foundation

McNeill Memorial Foundation
Martin E. Messinger
MountainOne, in honor of Mark Selkowitz
David & Janet Offensend
Mary Pope Osborne
Bernard Pinsonnault & Dianne Cutillo
Charles S. Pyle & Tina Hittenberger
Marshall & Marian Raser
Robert A.M. Stern Architects, LLP
L. Rosenthal & J. Bernstein
Mickey & Arlene Sego
Mark & Betsey Selkowitz
Barry Siegel
John Spellman & Cynthia McCollum
Aso Tavitian
Pittsfield Cooperative Bank
Robert & Elisabeth Wilmers

\$500-\$999

Eleanor Albano
Brian & Carey Alberg
Dick & Marsha Ambrose, in memory of Lee A. Williams
Berkshire Gas Company
Kelly Blau
The Bradford Exchange, LTD
Cain Hibbard Myers & Cook
Andrew & Jane Cohen
William Cohn & Rita Kasky
Cranwell Resort, Spa, & Golf Club
James & Catherine Daily
John & Janet Egelhofer
Mark & Elizabeth Ferber
Kath Fidler
Susan Giordan
Mark Gold & Ellen Kennedy
Renee Gross
Guardian Insurance Company of America
GVH Studio
Scott & Ellen Hand
Gene & Lynn April Hartline
The Henagan Foundation, in honor of Anne Morgan
Warren G. Herreid, II & Jeannine Rivet, in memory of Ronald L. Ringling
Estelle Hendrickson, in honor of Anne Morgan
Neil & Kathleen Holden
James & Joan Hunter
Gordon & Carole Hyatt
The Inn at Stockbridge

Robert Montgomery & Jane Iredale
Stephen & Leslie Jerome
Nancy K. Kalodner
Jamie Kiggen & Ani Shaker
John Lipkowitz
Nina Lipkowitz
Daniel & Susan Lipson
The Louisa Kreisberg Family Foundation, in memory of Louisa Kreisberg
John & Nan MacEwen
Massachusetts College of Liberal Arts
Sonya McNair Tonge
Alan & Alice Model
Craig & Laurie Norton Moffatt
Barbara Nessim & Jules Demchick
Linda P. O'Connell
O'Connell Oil Associates, Inc.
Devax & Diane Patrick
Irving & Sharon Picard
Price Chopper's Golub Foundation
Neil & Jana Purdy
Quality Printing Company, Inc.
Tom Rockwell
Paul & Jeanne Russ
Jim Schantz & Kim Saul
Charles & Mark Scharfman
Lester & Martin Shulkapper
James Sklar
George T. Smith
Joan D. Steinberg & David J. Steinberg, in honor of Thomas and Eileen Pulling
Robert & Virginia Stewart
David & Lois Swawite
Tornatore & Company
Jerry & Karen Waxberg
Jerry & Marjorie Weisskohl
Wheeler & Taylor, Inc.
Jamie Williamson & Bill Marley
Ralph & Linda Zagaria

\$250-\$499

Anonymous (4)
Norman Allen, III
J. Marshall & Alison Ash
Austen Riggs Center
Mary G. Avery
Robert & Sara Awe
Jennifer Ann Baker, in memory of Lee A. Williams
Bank of New York Mellon
Community Partnership
Berkshire Corporation
Roberta Berry
Marty & Glenna Bloom
Nicole B. Bourgeois
Cynthia Brown & Maura Delaney
Cengage Learning

Clark Art Institute
Climate Heating & Cooling Inc.
Basil & Jayne Cox, in honor of Anne Morgan
Crescent Creamery
Brendon DeMay & Julie Hecht
Marjorie Ellenbogen, in honor of Jill Gellert
Joel & Patricia Ellis
Excelsior Printing Company
Carl & Eunice Feinberg, in memory of Lee A. Williams
Paul & Sharon Fentner
Richard & Joan Fenton
Peter & Nancy Finn
Charles & Joy Flint
Michael & Renee Garrett
Richard & Monique Gershon
Tom & Dianne Gibson
Ben Goldberger & Emily Goldstein
Amy Gordon
Raymond & Janet Gorski
Ira Grable
David & Peggy Heck
Matt Heim & Heather Wells Heim
David & Paula Hellman
Paul & Maureen Hickey
Bob & Lynne Horvath, in honor of Anne Morgan
David & Patricia Hubbard
Albert & Kathleen Jaffe
Helga Kaiser-Orthofer
Mary Julia Kephart
Michael F. Kerrigan
Robert W. Kohanski
Thomas & Susanne Kornacki
Mort & Debbie Kunstler
Lee Bank
Lenox National Bank
Ted & Betsy Lewin
Lisa & Tom Lewis
Charles MacDonald
MacFarlane Office Products, Inc.
George & Susan Mani
Joshua D. Mann
Leonard & Barbara McCue
Frank & Candy McNally
Jaan & Jacqueline Metsma
Jennifer Miller-Goff
Judith Munzig
National Grid
Paul Neely
Lorne & Judith Norton
Steve Oakes & Olivia Georgia
Barbara Osborne
Parker Jewish Institute
Ronald D. Pierce
Lucy Prashker & Thomas Curtin, in honor of Laurie Norton Moffatt
J. Prince
F. Peter & Mary Rentz
Roberts & Associates Realty, Inc.

Katherine Rodgers
Jean & Georgeanne Rousseau
Frank & Linda Russell
Al & Mary Ann Sanborn
Patricia Savides
Gary Schieneman & Susan Fisher
Virginia & Susanna Schmidt
John & Zelda Schwebel
Hilary & Gretchen Scott
Richard & Carol Seltzer
Terry & Jane Shea
Shell Oil Matching Gift Program
Emil & Kathryn Skoglund
David Slick & Robin Seeley
Elwood Smith
Richard & Stephanie Solar
Alan C. Solomon & Ellen Donat
Mr. & Mrs. Vernon Squires
Kenneth & Lynn Stark
Mark & Barbara Stroock
Peggy Thieriot
Albert & Jacqueline Togut
William vanden Heuvel
Sandy Vandy, in memory of Lee A. Williams
Lori Waltzer Bernstein
Anne White
Williams College Museum of Art
Windy Hill Farm, Inc.
Sidney Witter & Barry Fein
Hisashi Yamagata
Bob & Karen Youdelman
Richard M. Ziter

\$100-\$249

Anonymous
Judith Abdalla
Joyce Abelson
Mark & Stephanie Abrams
Peter Abuisi
Jean Adelson
American Lithography Corp.
Richard & Teresa Ance
Eric & Susan Anderson
Kenneth & Ann Anderson
Arthur Appelstein & Lorraine Becker
Mary K. Arthur
Rachel Astalos
Diane Austin & Aaron Nurick
Rochelle W. Awstrian
Mr. & Mrs. Richard C. Bahler
Henry W. D. Bain
George S. Bain
Carliss Baldwin & Randy Hawthorne
Mary Balo
Rita M. Barredo
David R. Barrett
Jon Barrett & Lynn Evans
Jennifer Baum
Mark & Lori Beecher

Tom & Carol Beeler
Joan & Dino Beer
William D. Bell
Lillian Bender
Charles & Mary Ellen Benedetti
Susan Beringer
William & Rachel Berkowitz
Bruce & Catherine Bernstein
Edward Biggs
Barry & Marcia Blank
Michael & Dianne Blau
Art Blumenthal & Rhoda Ferat
Peter O. Bodnar & Robin M. Weiser
Jeffrey & Lynne Bolson
Barbara Bonner
Neal Borovitz & Ann Appelbaum
Bruce Bosworth
Elaine Bosworth
Scott & Ann Botel-Barnard
Jerry Bowles & Larry Weiss
Carl & Stephanie Bradford
Steven Brandwein
Frederick & Janet Braun, III
Joel Brehm & Rodney Dugas
Steve & Tracy Brooks
Maryellen Browarski
Nancy A. Brown
Donna Brown
Leslie Brown
Marc Brunet
Mark Bunnell & Julie Trager
Donna Burton
Jim & Marty Bush
John Duke Butler
Brian & Amy Butterworth
Joan Byrne
Richard Cabezas
Cellia Campbell
Michael & Mary June Cancellia
W. Parker Cane
John & Janet Canning
Paul & Tonia Carlo
John Carroll & Sherrie Farraher
Mike & Mary Cavanaugh
Thomas & Patricia Cerny
Ronald R. Charrette
Christina Chatroo
Lea Christo
Nancy Ciaschini & Joseph Berti
Michelle Clarkin & Marlene Eichholz
Stephanie Clayton
Nelson Clayton
Michelle Cochran
Chuck Coffrin & Kathleen Manelis
Coghlin Electrical Contractors, Inc.
Stephen & Elaine Cohen
Rick Cohen
Joseph & Phyllis Cohen
Seth Cohen
William & Patricia Collins

staff list 2014-2015

Priscilla Anthony
Joseph Aubert
Jason Barcus
Alisa Blanchard
Leslie Boudreau
Richard Bradway
Gail Burgner
Mark Carey
Michelle Clarkin
Jeremy Clowe
Daniel Colello Jr.
Holly Coleman
Thomas Daly
Michael Duffy
Jenna English
Jill Gellert
Deborah Hanson Greene
Carolyn Grogan
Kyle Hatch
Daniel Heck
Margit Hotchkiss

Customer Service Researcher
Manager of Visitor Services *through Feb. 2015*
Manager of Visitor Services
Manager of Business Office
Gift Shop Floor Coordinator
Director of Digital Learning and Engagement
Bookkeeper
Maintenance Assistant
Chief Advancement Officer
Manager of Media Services
Manager of Safety
Director of Human Resources
Curator of Education
Manager of Museum Store
Archives Assistant
Chief Operating Officer
Development Officer
Assistant Visitor Services Manager
E Commerce/Sales Associate
Webmaster & Interactive Media Designer
Deputy Director of Audience and Business Development
Special Events Coordinator *through July 2014*
Manager of Information Technology
Curator of Exhibitions

Patricia Hubbard
Frank Kennedy
Jesse Kowalski

VISITOR SERVICES

Elizabeth Adams, Deborah Araujo, Joseph Aubert, Jason Barcus, Marge Blair, George Church, Barbara Clarke, Judy Daly, Richard Edelstein, Sheila Gershoff, Stephen Gershoff, Bailey Girvan, Carolyn Grogan, Elaine Gunn, Beverly Kaplan, Amy LeFebvre, Marissa Milligan, Chelsea Moser, Haley Palmore, Larson Powell, Ramelle Pulitzer, Savannah Romeo, Barbara Rundback, Jennifer Sommerville, Beverly Thompson, Laura Tota, Claire Williams, Randolph Williams, Meg Williamson

SAFETY/SECURITY

Daniel Colello Jr., Alfred DeMaio, John DeShazo, Shaun Mackie, Sherilyn Mindermann, Gregory Moser, Christopher Soules, Stephen Sykes, Lexus Van Ness

EDUCATION

Tammis Coffin, Tom Daly, Valerie DeMarasse, Robin Florez, Elaine Gunn, Windrose Morris, Chelsea Moser, Monika Pizzichemi, Barbara Rundback, Alicia Soos, Beverly Thompson, Claire Williams

MUSEUM STORE/WAREHOUSE

Leslie Boudreau, Mike Duffy, Robin Florez, Sharon Goethe, Kyle Hatch, Susan Mani, Sally Melville, Meagan Milligan, Jennifer Sommerville, Crystal Sawyer, Marie Sykes, Sophie Shrum, Linda Utz

INTERNS

2014
Jenna English, Amanda Knox, Amy LeFebvre, Haley Palmore, Brett Katharine Porter, Savannah Romeo, Amanda Wood
2015
Allison Blanning, Bailey Girvan, Sarah Goethe-Jones, Cassandra Houle, Alyssa Klein, Savannah Romeo, Morgan Schuler

Lisa Lewis
Martin Mahoney
Ellen Mazzer
Mary Melius
Thomas Mesquita
Chelsea Moser
Lynda Mulvey
Laurie Norton Moffatt
Stephanie Plunkett
Jana Purdy
Barbara Rundback

Crystal Sawyer
Joyce K. Schiller

Tara Shimandle
Wesley Shufelt
David Slick Jr.
Terry Smith
Ann Sterlin
Joseph Tonetti
Laura Tota
Venus Van Ness
Edward Ziarnik

Director of Membership & Special Events
Director of Collections & Exhibitions
Sales & Marketing Coordinator
Manager of Traveling Exhibitions
Registrar
Development Assistant *through June 2015*
Sales & Events Coordinator *through July 2014*
Director/Chief Executive Officer
Deputy Director and Chief Curator
Events Manager
Collections Assistant/Digital Experience Coordinator
Warehouse Coordinator
Curator/Rockwell Center for American Visual Studies *through August 2014*
Membership & Data Base Coordinator
Manager of Facilities *through July 2015*
Manager of Facilities
Chief Operating Officer *through July 2014*
Executive Assistant to the Director
Preparator
Visitor Services Associate
Archivist
Warehouse Assistant

VOLUNTEERS

Stephanie Beling, Robert Bujalski, Daniel Carubia, George Church, Sarah Clowe, Sherry Citrin, Carlton Dodge, Susan Doscher, Walter and Mary Jo Engels, Paul and Marilyn Flaum, Patricia Hubbard, Calvin Lewis, Szofia Lewis, Ed and Fran Locke, Phyllis Lieberman, Amy Mann, Cindy McCollum, Tom and Ruth McNulty, Arnold Miller, Aubrey Milligan, Meagan Milligan, Marissa Milligan, Linda Olson, Joan Parker, Joan Powers, Ann Printon, Jana Purdy, Judy Rapping, Marion Raser, Ingrid Richardson, David Robin, Savannah Romeo, Charlie Schulze, Judy Shaw, Molly Sheriff, Sylvia Silverberg, Marion Simon, Gordon Soule, John Spellman, JoAnne Spies, Michael Stephen, Joe Wheaton, Anne White, Claire Williams, Linda Zagaria
Volunteers Emeriti: Florence Andrews, Lenore Ladenheim



IMAGE CREDITS

FRONT AND BACK COVER: Norman Rockwell (1894-1978), *United Nation* (detail), 1953. Study for an unfinished illustration. Pencil and charcoal on paper. Norman Rockwell Museum Collections. / Photos ©Norman Rockwell Museum. Unless otherwise noted.

PAGE 2: Norman Rockwell (1894-1978), *Portrait of Norman Rockwell Painting "The Soda Jerk,"* 1955. Norman Rockwell Museum Collection. ©Norman Rockwell Family Agency. All rights reserved.

PAGE 14: Norman Rockwell (1894-1978), *The Gossips* (study), 1948. Norman Rockwell Museum Collections. ©Norman Rockwell Family Agency. All rights reserved.

PAGE 18: Top to bottom: Norman Rockwell (1894-1978), *Willie Gillis in Church*, 1942. Norman Rockwell Museum Digital Collections. ©SEPS: Curtis Licensing, Indianapolis, IN / Edward Hopper (1882-1967), Cover illustration for *Hotel Management*, September 1924. ©Heirs of Josephine N. Hopper. Licensed by Whitney Museum of American Art, N.Y. / Mort Künstler, *How Real Sliders Live*, 2011. Collection of the artist. ©Mort Künstler Inc. All rights reserved. / Roz Chast, *The Birth of Venus*, 2014. ©Roz Chast. All rights reserved. Image courtesy of Danese/Corey Gallery and Condé Nast, New York City.

PAGES 25- 29: Images are credited on pages 24-25

PAGES 31: Top to bottom: Roz Chast, illustration from *Can't We Talk About Something More Pleasant?* 2014. ©Roz Chast. All rights reserved. / J.C. Leyendecker (1874-1951), *Kissing Cupid*, 1923. The Kelly Collection of American Illustration. / Mort Künstler, *Warms Icy Man Chill*, 2012. Collection of the artist. ©Mort Künstler Inc. All rights reserved. / Edward Hopper (1882-1967), *(A Theater Entrance)*, (1906-1910). Whitney Museum of American Art, New York; Josephine N. Hopper Bequest 70.1378 © Heirs of Josephine N. Hopper, licensed by Whitney Museum of American Art Digital Image © Whitney Museum of American Art.

NORMAN ROCKWELL MUSEUM

P. O. Box 308, 9 Glendale Road, Stockbridge, MA 01262

nrm.org