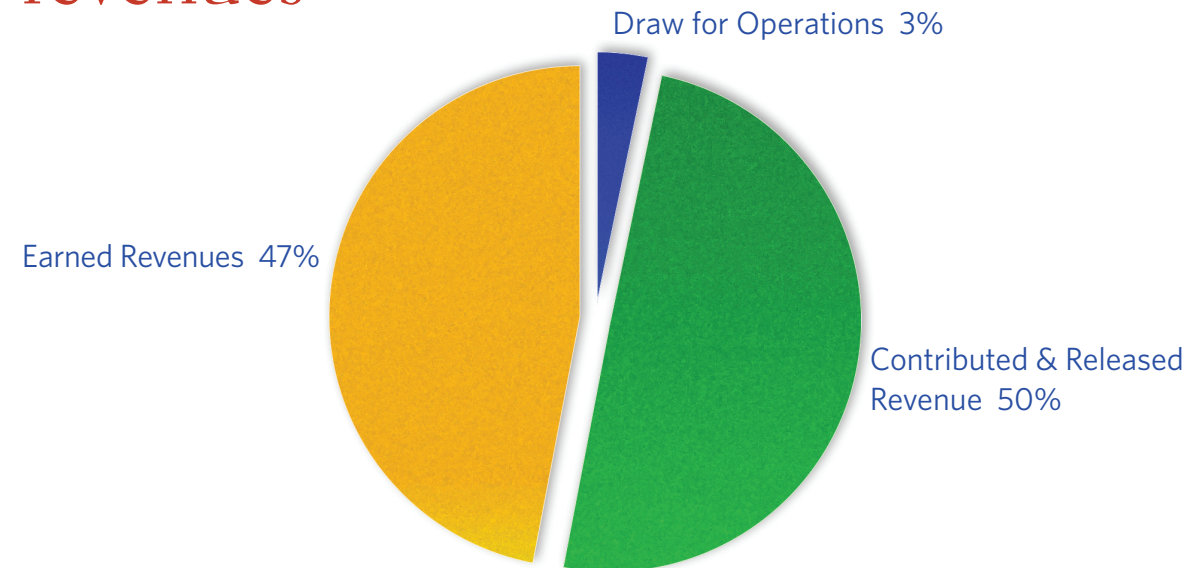
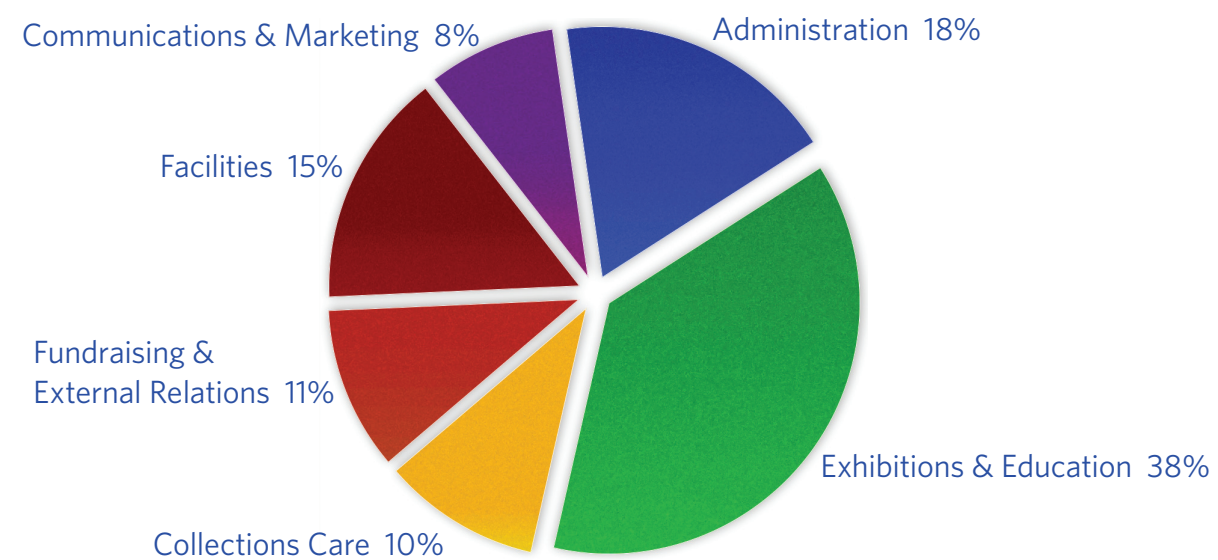


## revenues



## expenses



### FINANCIAL STATEMENTS AS OF JUNE 30, 2019

Condensed Statement of Financial Position	fy 19	fy 18
<b>Assets</b>		
Cash	\$1,991,386	\$1,203,113
Receivables	604,911	289,840
Inventory	415,113	423,394
Investments	5,274,656	4,834,928
Property and Equipment	<u>3,532,336</u>	<u>3,709,343</u>
<b>Total assets</b>	<b>\$11,818,402</b>	<b>\$10,460,618</b>
<b>Liabilities and Net Assets</b>		
Payables	\$380,862	\$222,985
Debt	0	0
Deferred Income	<u>577,750</u>	<u>129,682</u>
Total Liabilities	958,611	352,667
Total Net assets	<u>10,859,791</u>	<u>10,107,951</u>
<b>Total Liabilities &amp; Net Assets</b>	<b>\$11,818,402</b>	<b>\$10,460,618</b>
<b>Condensed Statement of Activities</b>		
Admissions Income	\$ 1,835,543	\$1,911,885
Gross Profit from Store Operations	791,771	871,999
Traveling Exhibition Fees	248,525	169,100
Other Earned Revenues	68,723	87,796
Contributions	1,376,473	1,581,291
Memberships	275,986	252,133
Grants	416,327	712,600
Investment Income for Operations	205,638	191,867
Released from Restriction for operations	<u>1,047,001</u>	<u>950,693</u>
<b>Total Operating Revenue</b>	<b>\$6,265,987</b>	<b>\$6,729,364</b>
<b>Operating Expenses</b>		
Exhibitions & Education	\$2,332,306	\$2,848,328
Collections Care	631,953	561,704
Fund Raising & External Relations	654,023	451,932
Facilities & Depreciation	940,351	845,584
Marketing & Communications	511,997	523,361
Administration & Business Operations	<u>1,128,767</u>	<u>1,078,361</u>
<b>Total Operating Expenses</b>	<b>\$6,199,397</b>	<b>\$6,309,270</b>
<b>Net change in assets from operations</b>	<b>\$66,590</b>	<b>\$420,094</b>
Income from Investments, net of draw for operations	345,988	120,870
Art Purchases	-	(4,200)
Net restricted income	339,262	(7,623)
<b>Net change in assets</b>	<b>\$751,840</b>	<b>\$529,141</b>