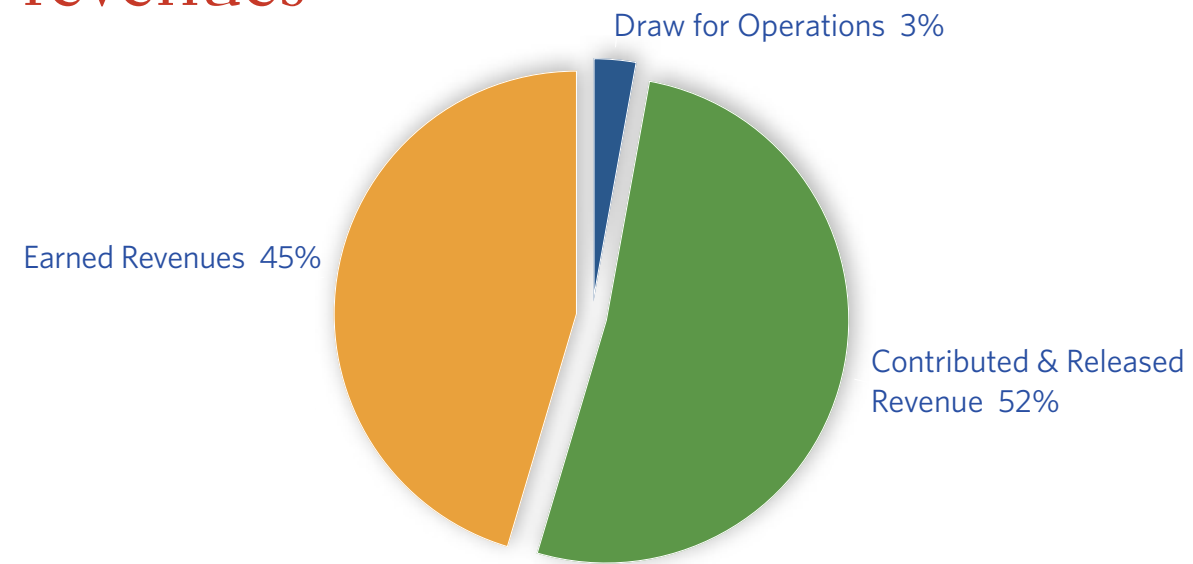
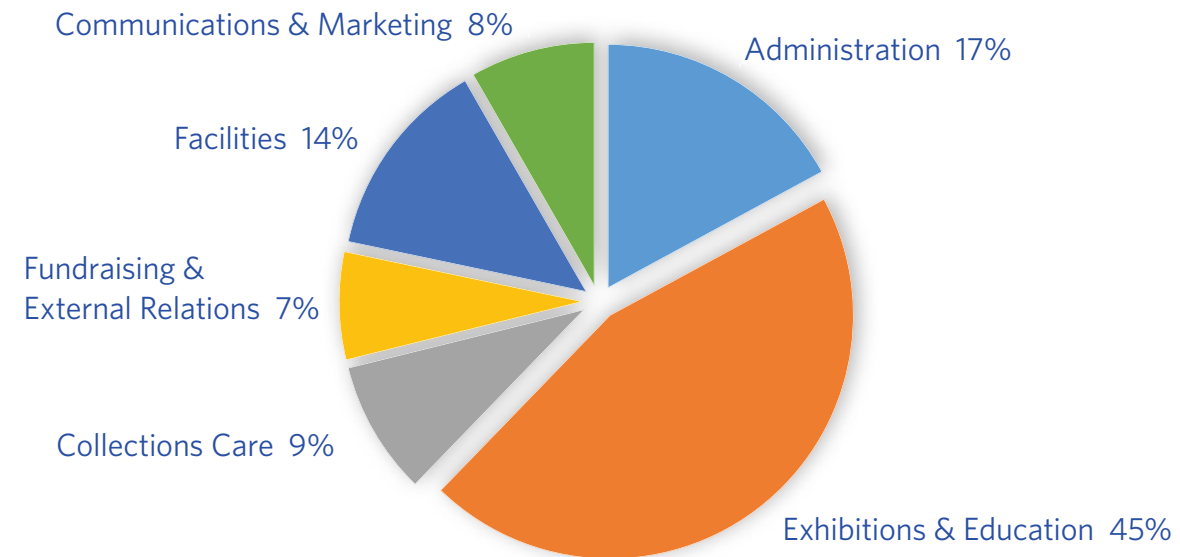


revenues



expenses



FINANCIAL STATEMENTS AS OF JUNE 30, 2018

Condensed Statement of Financial Position

	fy 18	fy 17
Assets		
Cash	\$1,203,113	\$1,240,723
Receivables	289,840	175,622
Inventory	423,394	561,908
Investments	4,834,928	4,202,392
Property and Equipment	<u>3,709,343</u>	<u>3,765,558</u>
Total assets	\$10,460,618	\$9,946,203
Liabilities and Net Assets		
Payables	\$222,985	\$145,403
Debt	0	0
Deferred Income	129,682	221,990
Total Liabilities	352,667	367,393
Total Net assets	<u>10,107,951</u>	<u>9,578,810</u>
Total Liabilities & Net Assets	\$10,460,618	\$9,946,203

Condensed Statement of Operations

Admissions Income	\$1,911,885	\$1,779,762
Gross Profit from Store Operations	871,999	779,997
Traveling Exhibition Fees	169,100	137,500
Other Earned Revenues	87,796	125,611
Contributions	1,581,291	1,494,479
Memberships	252,133	226,874
Grants	712,600	250,400
Investment Income for Operations	191,867	178,370
Released from Restriction for operations	<u>950,693</u>	<u>608,323</u>
Total Operating Revenue	\$6,729,364	\$5,581,316
Operating Expenses		
Exhibitions & Education	\$2,848,328	\$2,183,805
Collections Care	561,704	501,155
Fund Raising & External Relations	451,932	446,154
Facilities & Depreciation	845,584	863,479
Marketing & Communications	523,361	466,278
Administration & Business Operations	<u>1,078,361</u>	<u>1,111,741</u>
Total Operating Expenses	\$6,309,270	\$5,572,604
Net change in assets from operations	\$420,094	\$8,704
Income from Investments, net of draw for operations	120,870	96,393
Art Purchases	(4,200)	(3,050)
Net restricted income	(7,623)	238,074
Net change in assets	\$529,141	\$340,121